



# HealthHubPROJECT



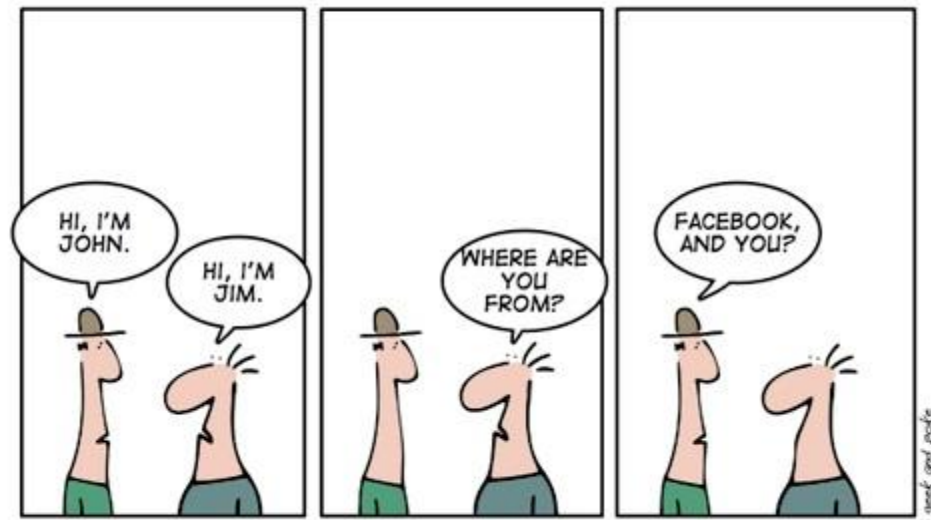
WELLNESS



EDUCATION



RESEARCH



ambiguity



Search ID: dmc0185

"There you go, Professor: One dry  
martini and a first edition of Hegel's  
'Phenomenology of spirit'."



thesis

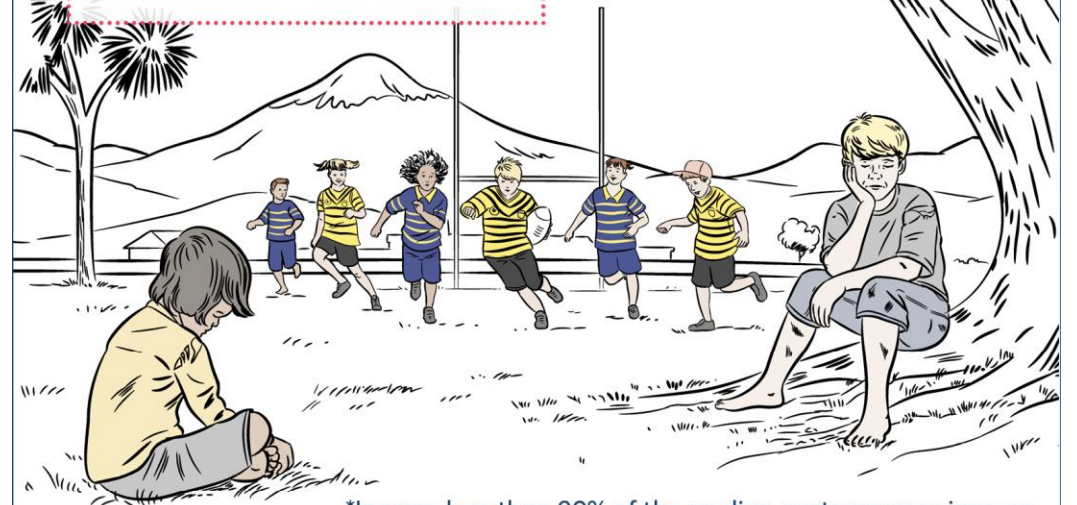




## Income Poverty

**295,000**  
**NZ KIDS** LIVE IN  
HOUSEHOLDS WITH LOW INCOMES\*

**28%**  
OF KIWI KIDS



\*Income less than 60% of the median contemporary income

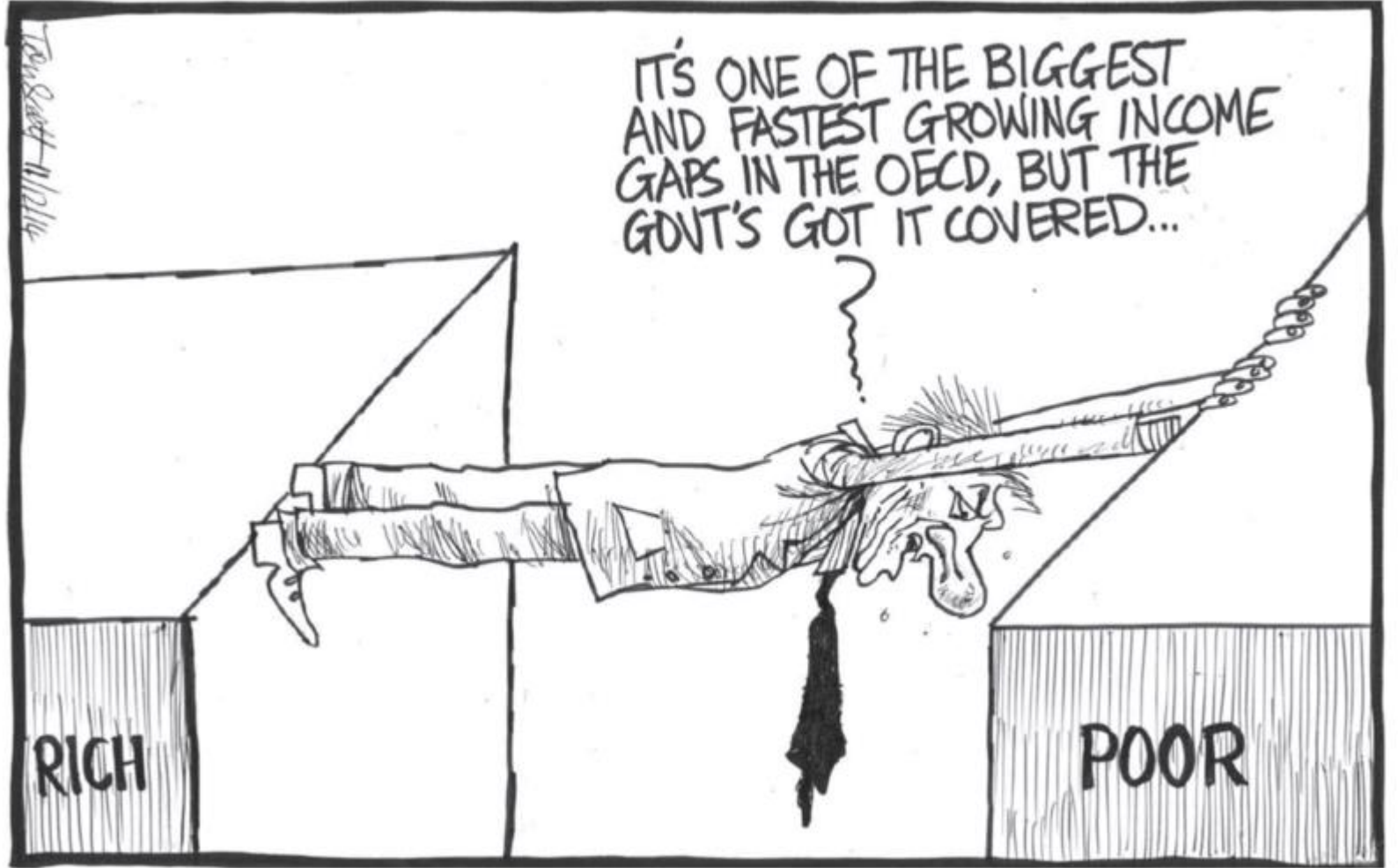
NZ's homelessness the worst in OECD - by far  
21/07/2017  
Dan Satherley (Yale Global Online)



1949 - family in front of a State House and with a car.



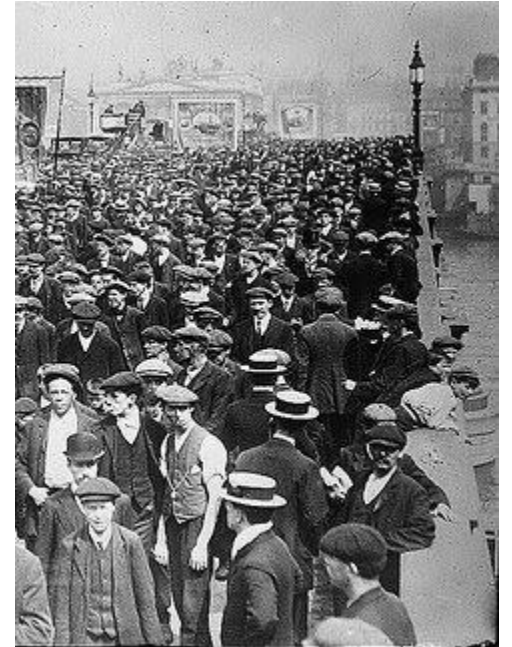
2016 - family with no State house and living *in* a car!





Unreal City,  
Under the brown fog of a winter dawn,  
A crowd flowed over London Bridge, so many,  
I had not thought death had undone so many.  
Sighs, short and infrequent, were exhaled,  
And each man fixed his eyes before his feet.  
Flowed up the hill and down King William  
Street,  
To where Saint Mary Woolnoth kept the hours  
With a dead sound on the final stroke of nine.

*T S Eliot The Waste Land*





# GP

Heart of the community  
**Kāinga Tupu**



The Royal New Zealand  
College of General Practitioners  
Te Whare Tohu Rata o Aotearoa

Unless we address the drivers of poor health no matter what we spend on health we will not achieve a reduction in preventable diseases.

Prof David Williams  
Professor of Public Health  
Harvard University





*The righter we do the wrong thing the wronger we become  
When we make a mistake doing the wrong thing and correct it, we become wronger.  
When we make a mistake doing the right thing and correct it, we become righter.  
Therefore, it is better to do the right thing wrong than the wrong thing right.*

*Most of our current problems are the result of policy makers  
and managers busting a gut to do the wrong thing right.*

*Russ Ackoff*



antithesis

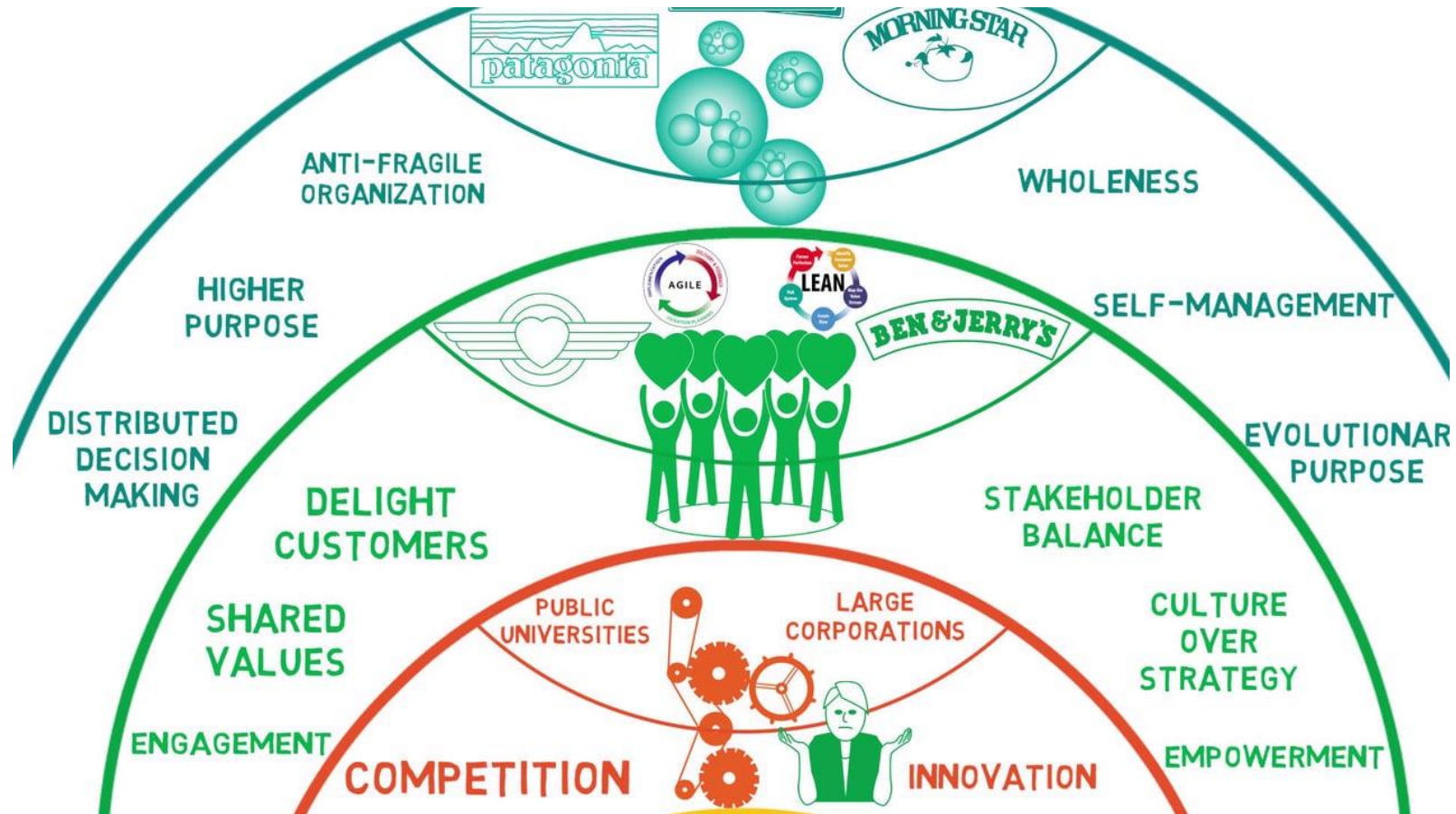


Beware of experts:  
Call on the radical  
outsiders





"This really is an innovative approach, but I'm afraid we can't consider it. It's never been done before."

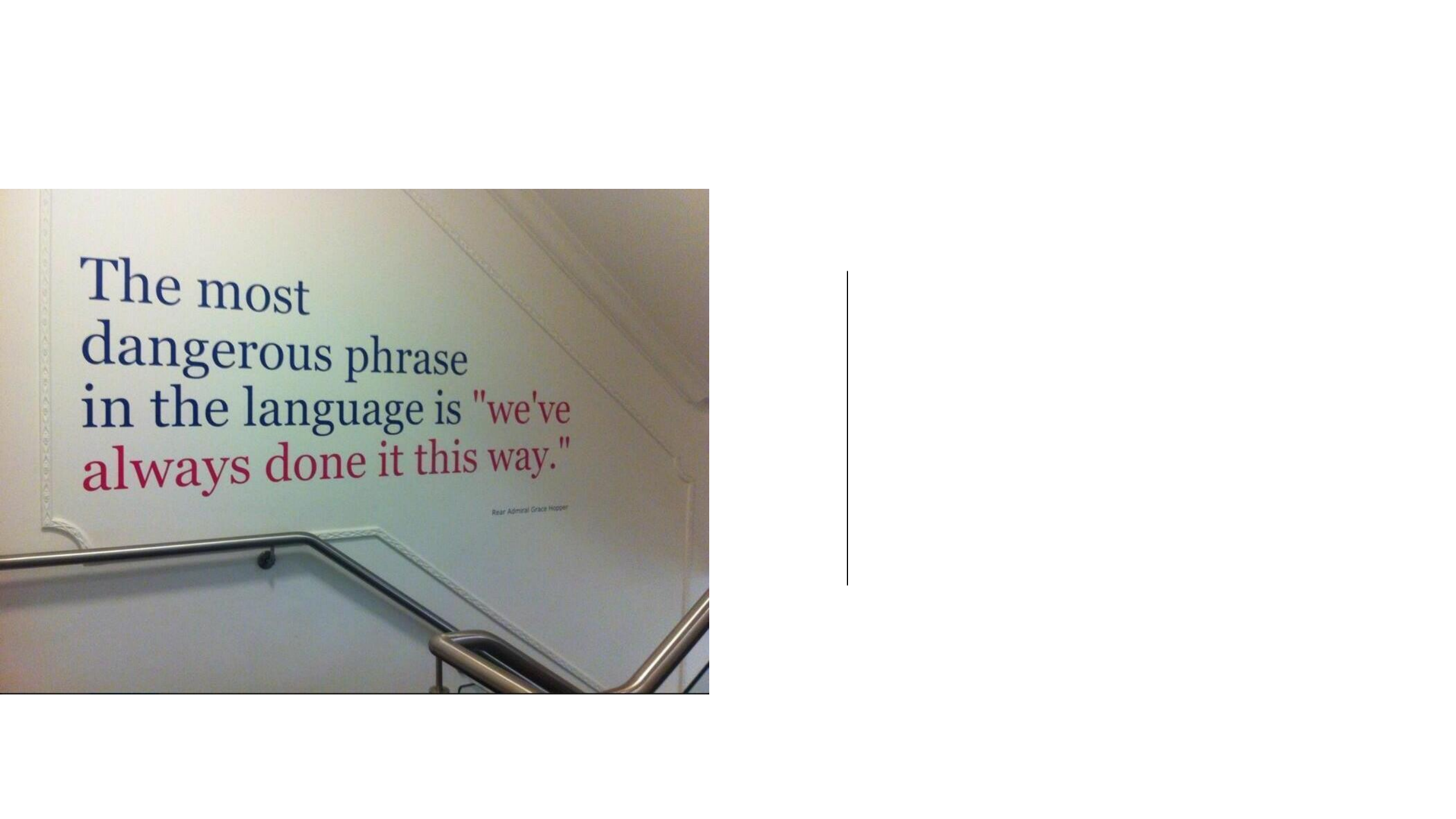






self-management..  
wholeness  
evolutionary purpose

---

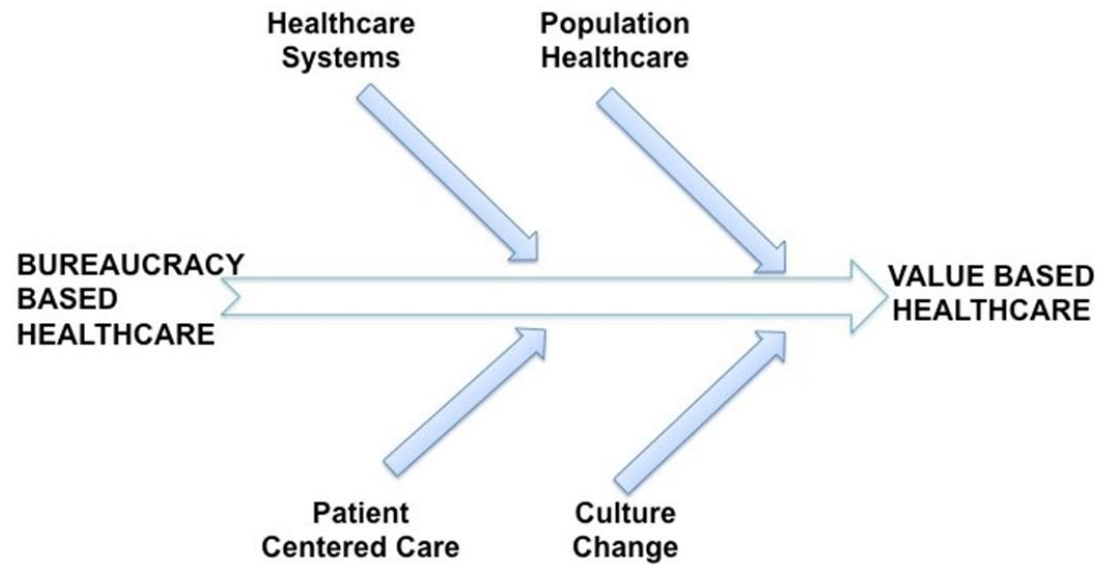
A photograph of a staircase wall. The wall is light-colored with a decorative border on the left. A metal handrail runs along the wall. The text is printed on the wall in a serif font. The first part of the text is in dark blue, and the second part is in red.

The most  
dangerous phrase  
in the language is "we've  
always done it this way."

Rear Admiral Grace Hopper

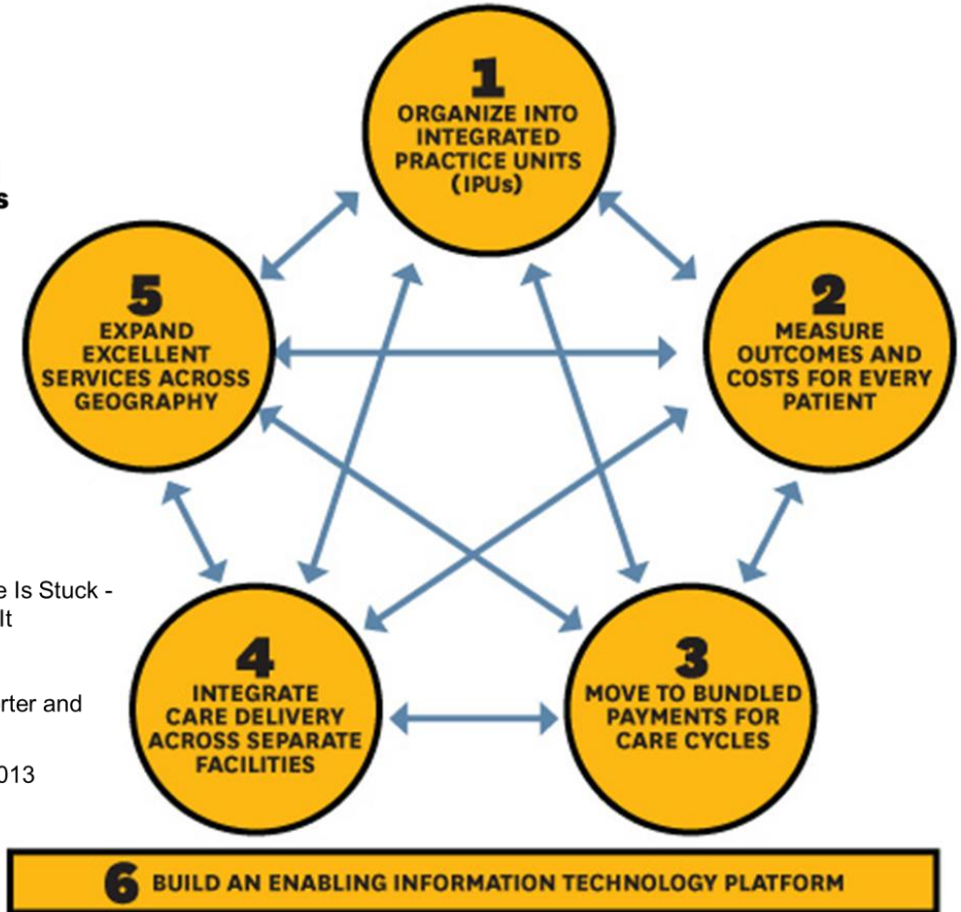


# Better Value HEALTHCARE



## THE VALUE-BASED SYSTEM

The strategic agenda for moving to a high-value delivery system has six interdependent elements.



Why Health Care Is Stuck - And How To Fix It

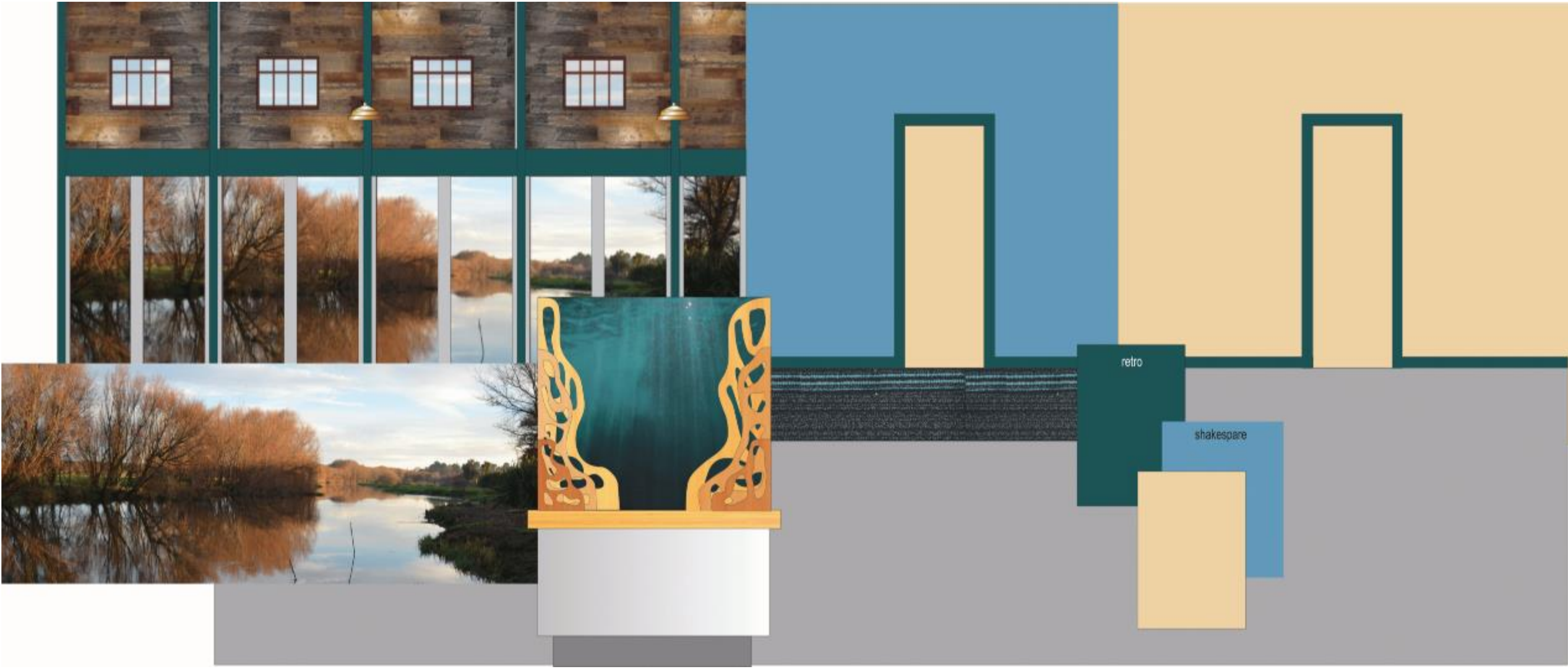
By Michael E Porter and Thomas H Lee

September 17 2013

SOURCE MICHAEL E. PORTER

HBR.ORG







Emmanuel Design  
Innovative Interactives  
and Exhibitions

Not to Scale  
4/1/2017  
027 4151 293

Health Hub Project  
Proposed Central Hub Design



# Health Hub Project Proposed Central Hub Design



Emmanuel Design  
Innovative Interactives  
and Exhibitions

Not to Scale  
4/1/2017  
027 415 999





Acquired practice assets and started creating an emergent organisation – the antithesis of doctor centric delivery of healthcare

self-management  
wholeness  
evolutionary purpose





Population health – the simple notion that if you get individual health right population health follows – deliver value

self-management

wholeness

evolutionary purpose



Hub and node model





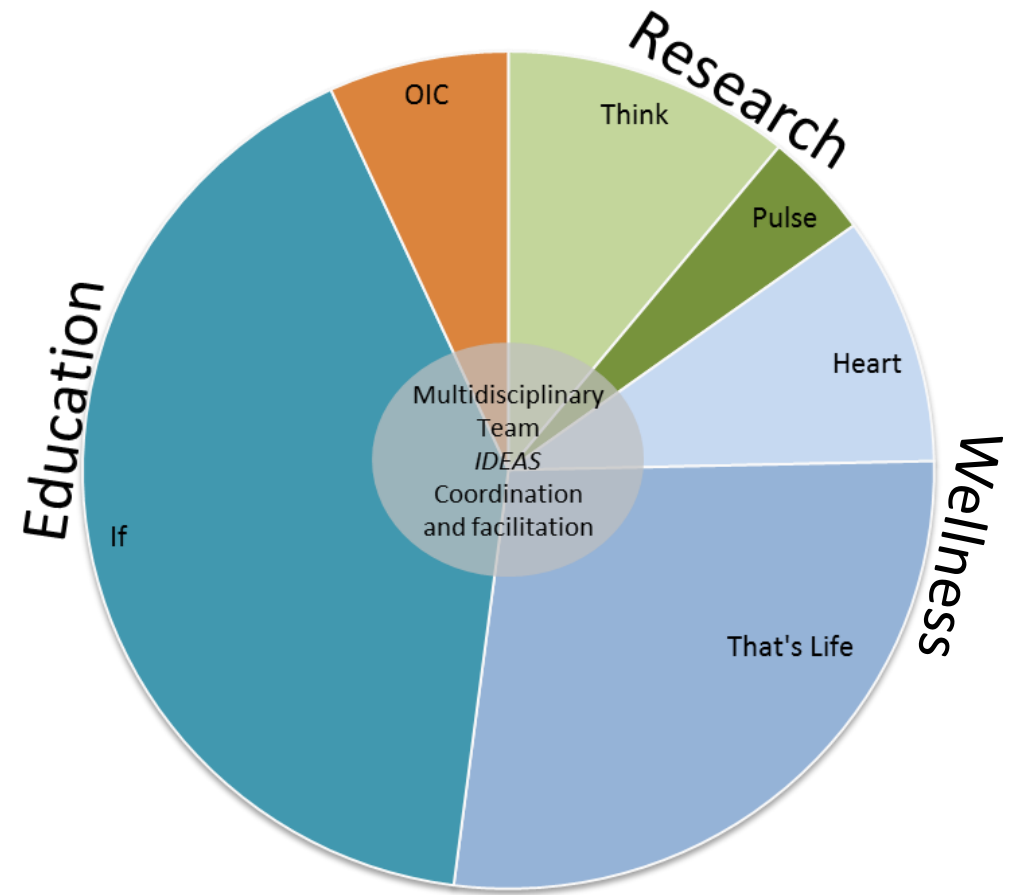
The emergent organisation is a paradox, in that from apparent chaos it leads to the radical simplification of everything



Linked patient support teams where everyone works at their full scope

clinical diagnosis teams

clinical care teams – working in a wider community of practice: *joined up practice, everything for the patient*







The music of strangers: an invitation  
for collaboration and partnership – the new antithesis process



## Research / collaborations:

social exclusion, cohesion, isolation  
and disease

gender - sexual justice

mobile health

clinical pharmacist / community  
pharmacy

mental health



Social enterprise investment – local business partnerships

Trust development for community investment

“I wanted a perfect ending.  
Now I've learned, the hard  
way, that some poems don't  
rhyme, and some stories  
don't have a clear beginning,  
middle, and end. Life is about  
not knowing, having to change,  
taking the moment and making  
the best of it, without knowing  
what's going to happen next.  
**Delicious Ambiguity.**”

Gilda Radnor

21 Nov 2012 9:20 pm