

# HEALTHONE

## SHARED HEALTH RECORD

ENABLING BETTER, SAFER PATIENT CARE

**Nigel Millar | Chief Medical Officer**  
**Southern DHB**



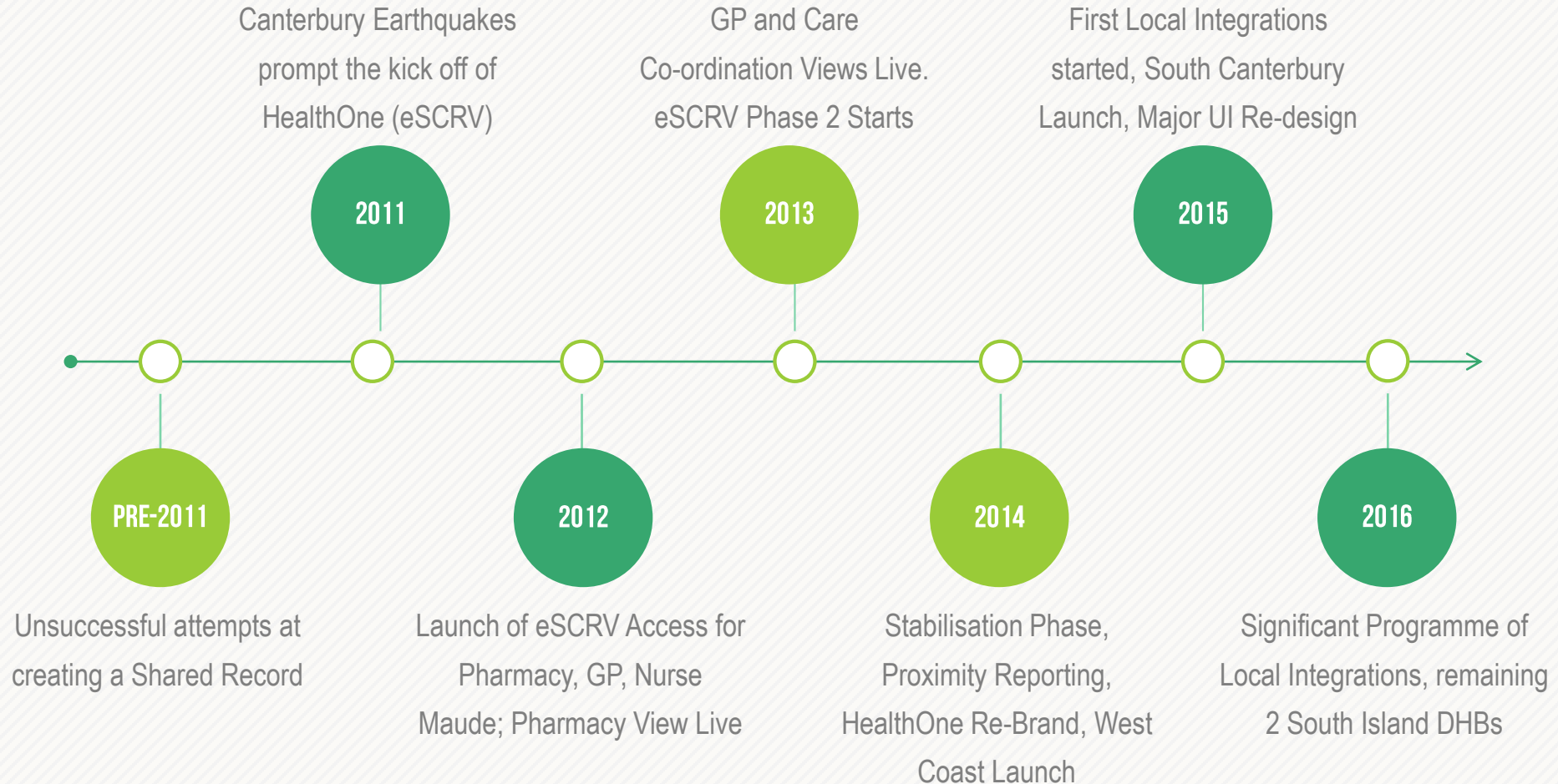
# INTRODUCTION

THE HISTORY OF HEALTHONE, OUR GOVERNANCE, AND OUR VISION



# THE HEALTHONE HISTORY

HEALTHONE LAUNCHED IN 2012, BUT CREATING A SHARED RECORD STARTED LONG BEFORE THAT...

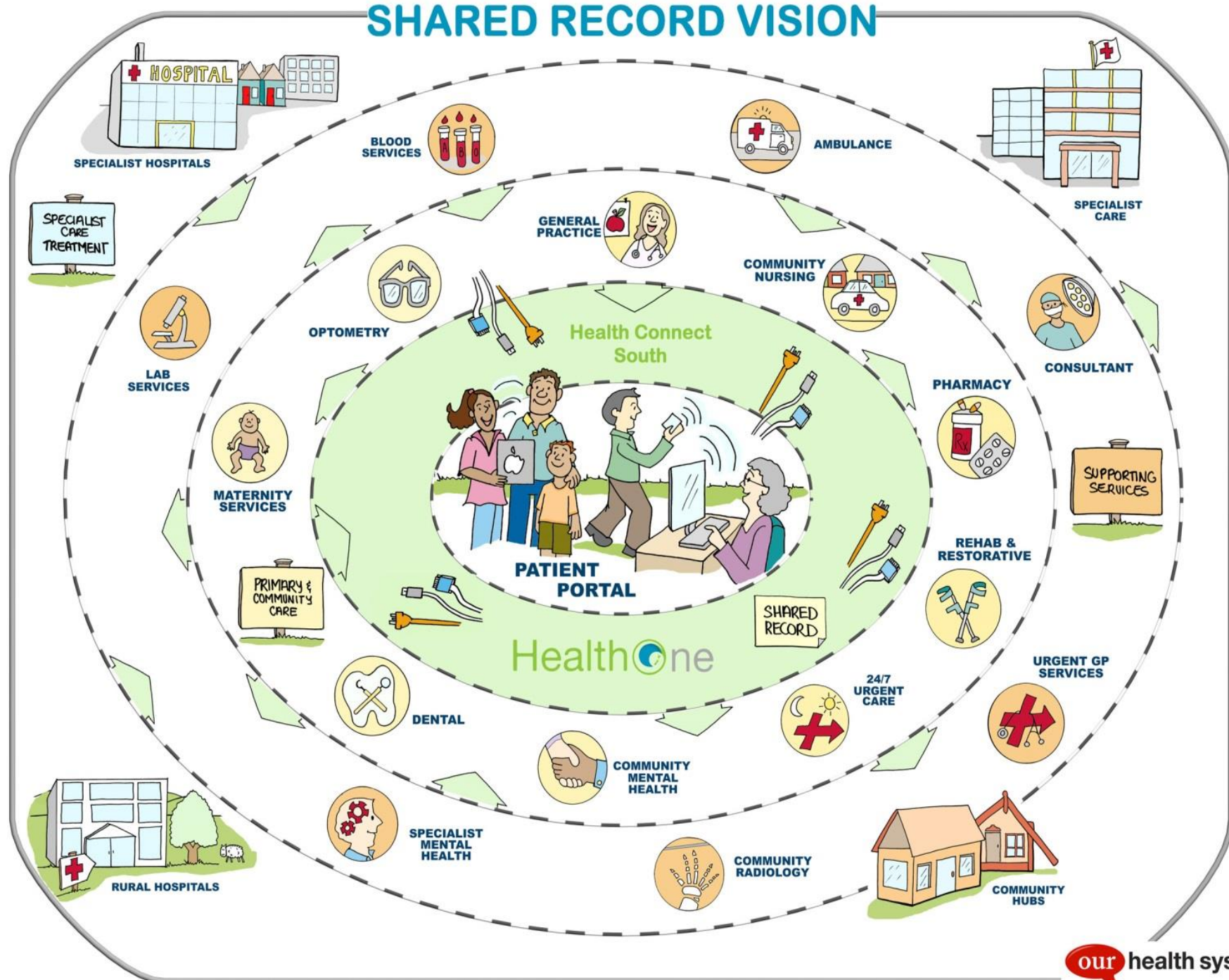








# SHARED RECORD VISION



Shared knowledge - better safer, care

A healthcare professional in a white coat is seen from the back, facing a woman with blonde hair and bangs wearing a blue cardigan. They are in a clinical setting with shelves of medical supplies and a computer monitor in the background. The woman is holding a purple pen and looking at the professional.

# ABOUT HEALTHONE

WHAT HEALTHONE LOOKS LIKE, WHO IS USING IT, AND HOW OFTEN





# HEALTHONE FUSION

AT THE HEART OF HEALTHONE IS THE ORION CDR, CLINICAL PORTAL, AND RHAPSODY. BUT HEALTHONE ALSO INCLUDES:

## ACCESS MATRIX

Access controls for HealthOne and Concerto. 5 primary roles, 13 base secondary roles, and 30 extended roles, all agreed by clinicians and governance

## HEALTHONE VIEWER

Seamless link from a PMS system to the patient in-context in HealthOne. Also facilitates user messaging

## ON-BOARDING

For new healthcare providers, including initial assessment, prioritisation, legal agreements, and technical & business requirements

## STANDARD API

FHIR-based API, including standards around the connection & secure transfer methods of data, message content and acknowledgement

## PRIVACY & PROXIMITY

Extensive privacy framework processes & SOPs, including opt off, user access reporting, patient record provision; and Proximity Auditing model

## WRAP-AROUND

Other processes and tools that are a part of HealthOne include: HealthOne Extractor, Config Tool, Web Services, Reporting Tools, and Training



# HEALTHONE SUMMARY SCREEN

DOO, Scooby

DOB 28-Aug-1955 (60y)

SEX M

NHI ZAA0202

INPATIENT

X

< >

Home

Pegasus PC Clinician

LOGOUT

Clinical Docs

Eclair (NW)

HealthOne

Appts

Eclair Results

CCMS

Clinical Resources

Clinical Notices

SUMMARY

Services

Observations

Medications

Diagnoses

Alerts/Warnings

NOTE - While all care has been taken in the preparation of the medical record, no warranty is given as to the accuracy, completeness or reliability of the data displayed. Information may be either missing or hidden due to a patient choosing to opt off, a facility not providing data, or due to access restrictions that are reflective of profession/role. Please always verify and check against other sources.

Enrolled GP

GP	Practice
Dr M Wilson	Woodham Road Health Care

Diagnoses Summary

View All

Key: Red = Highlighted, Blue = Long Term

Date	Classification	Comments	Source
16 Sep 2015	Joint isotope studies	test	Akaroa Health center
05 Oct 2015	Farming foreman	Doo Farming show	Woolston Medical Rooms
05 Oct 2015	Abdominal pain type	Doo Classification Abdominal	Mt Pleasant Medical Centre
31 Aug 2015	Cerv intraep neop grade I	Test	Akaroa Health center
31 Aug 2015	Diabetic retinopathy	Test Diabetic	Akaroa Health center
31 Aug 2015	ECG	test	Akaroa Health center

Results 1-6

Services Summary

View All

Key: Green = Current Service

Start Date	Provider	Service	End Date	Details
21 Jul 2015	Nurse Maude Association	Canterbury DN Wound C		
22 May 2014	Excell Home Health - CH	Canterbury DN Wound C		
05 Nov 2015	Sumner Medical Rooms	General Practice	05 Nov 2015	
13 Oct 2015	Akaroa Health center	General Practice	13 Oct 2015	
05 Oct 2015	Woolston Medical Rooms	General Practice	05 Oct 2015	
05 Oct 2015	Mt Pleasant Medical Centre	General Practice	05 Oct 2015	
29 Sep 2015	Reefton on the WC	General Practice	29 Sep 2015	

Alerts/Warnings (10 items)

View All

Date	Alert/Warning	Notes	Source
13 Oct 2015	Yarrow	Test	Akaroa Health center
13 Oct 2015	Siberian ginseng	Test	Akaroa Health center
05 Oct 2015	Abetimus	Doo Abetimus	Mt Pleasant Medical Centre
02 Oct 2015	Beta-glucans	Test	Akaroa Health center
02 Oct 2015	Balsam of Peru	Test	Akaroa Health center
02 Oct 2015	Japanese knotweed	Test	Akaroa Health center
31 Aug 2015	BCG preparations		Akaroa Health center
31 Aug 2015	Penicillins	Test	Akaroa Health center
12 Aug 2015	Yeast and yeast protein	Test modified on today displays 12	Akaroa Health center
11 Aug 2015	Balsam of Peru	test 11 - modified on 13th	Akaroa Health center

AN OVERVIEW OF THE PATIENT'S RECORD

HEALTHONE OVERVIEW | DECEMBER 2015

8





# HEALTHONE SERVICES SCREEN

DOO, Scooby

DOB 28-Aug-1955 (60y)

SEX M

NHI ZAA0202

INPATIENT

< >

Home

Pegasus PC Clinician

LOGOUT

Clinical Docs

Eclair (NW)

HealthOne

Apts

Eclair Results

CCMS

Clinical Resources

Clinical Notices

SUMMARY

Services

Observations

Medications

Diagnoses

Alerts/Warnings

### Services

NOTE - While all care has been taken in the preparation of the medical record, no warranty is given as to the accuracy, completeness or reliability of the data displayed. Information may be either missing or hidden due to a patient choosing to opt off, a facility not providing data, or due to access restrictions that are reflective of profession/role. Please always verify and check against other sources.

Date

Any Time

Last Month

Last Six Months

Last Twelve Months

Source

Search

Submit

Clear Filters

Key: Green = Current Services

Start Date	Provider	Service	End Date	Details
21 Jul 2015	Nurse Maude Association	Canterbury DN Wound Care: Non complex		
22 May 2014	Excell Home Health - CH	Canterbury DN Wound Care: Non complex		
05 Nov 2015	Sumner Medical Rooms	General Practice	05 Nov 2015	
13 Oct 2015	Akaroa Health center	General Practice	13 Oct 2015	
05 Oct 2015	Woolston Medical Rooms	General Practice	05 Oct 2015	
05 Oct 2015	Mt Pleasant Medical Centre	General Practice	05 Oct 2015	
29 Sep 2015	Reefton on the WC	General Practice	29 Sep 2015	
12 Jul 2014	Nurse Maude Association	Canterbury DN Wound Care: Non complex	01 Aug 2014	
31 Oct 2013	Nurse Maude Association	Canterbury ACC Nursing	01 Nov 2013	
31 Oct 2013	Medication Management Service	Canterbury Medicine Review	01 Nov 2013	
13 Oct 2013	Nurse Maude Association	Canterbury DN Wound Care: Non complex	29 Dec 2013	
30 Mar 2012	Access Home Health - CH			
20 May 2011	Access Home Health - CH			
16 Jun 2010	Nurse Maude Association	Canterbury DN Other	01 Jul 2010	
26 Jun 2009	Healthcare New Zealand - Christchurch	Canterbury DN Other	04 Sep 2009	

< Previous | Next >

Results 1-15 of 19

THE SERVICES THE PATIENT IS SEEING



# HEALTHONE OBSERVATIONS SCREEN

DOO, Scooby

DOB 28-Aug-1955 (60y)

SEX M

NHI ZAA0202

INPATIENT

X

< >

Home

Pegasus PC Clinician

LOGOUT

Clinical Docs

Eclair (NW)

HealthOne

Appts

Eclair Results

CCMS

Clinical Resources

Clinical Notices

SUMMARY

Services

Observations

Medications

Diagnoses

Alerts/Warnings

Observations

NOTE - While all care has been taken in the preparation of the medical record, no warranty is given as to the accuracy, completeness or reliability of the data displayed. Information may be either missing or hidden due to a patient choosing to opt off, a facility not providing data, or due to access restrictions that are reflective of profession/role. Please always verify and check against other sources.

Date

Any Time

Last Month

Last Six Months

Last Twelve Months

Source

Search

Submit

Clear Filters

Date	Measurement Type	Result	Source
13 Oct 2015	Systolic/Diastolic Blood Pressure	120 / 80 mmHg	Akaroa Health center
13 Oct 2015	Body Weight	45 Kg	Akaroa Health center
05 Oct 2015	Body Weight	82 Kg	Woolston Medical Rooms
05 Oct 2015	Systolic/Diastolic Blood Pressure	101 / 100 mmHg	Mt Pleasant Medical Centre
02 Oct 2015	Body Weight	50 Kg	Akaroa Health center
02 Oct 2015	Systolic/Diastolic Blood Pressure	20 / 20 mmHg	Akaroa Health center
31 Aug 2015	Systolic/Diastolic Blood Pressure	130 / 90 mmHg	Akaroa Health center
31 Aug 2015	Systolic/Diastolic Blood Pressure	120 / 80 mmHg	Akaroa Health center
13 Aug 2015	Body Weight	40 Kg	Akaroa Health center
13 Aug 2015	Systolic/Diastolic Blood Pressure	1 / 2 mmHg	Akaroa Health center
10 Aug 2015	Body Weight	14 Kg	Akaroa Health center

Results 1-11

MULTI-SOURCE OBSERVATIONS





# HEALTHONE ALERTS & WARNINGS SCREEN

DOO, Scooby

DOB 28-Aug-1955 (60y)

SEX M

NHI ZAA0202

INPATIENT

< >

🏠

Pegasus PC Clinician

LOGOUT

Clinical Docs

Eclair (NW)

HealthOne

Appts

Eclair Results

CCMS

Clinical Resources

Clinical Notices

SUMMARY

Services

Observations

Medications

Diagnoses

Alerts/Warnings

Alerts/Warnings

NOTE - While all care has been taken in the preparation of the medical record, no warranty is given as to the accuracy, completeness or reliability of the data displayed. Information may be either missing or hidden due to a patient choosing to opt off, a facility not providing data, or due to access restrictions that are reflective of profession/role. Please always verify and check against other sources.

Date

Any Time

Last Month

Last Six Months

Last Twelve Months

Source

Search

Submit

Clear Filters

Date	Alert/Warning	Notes	Source
13 Oct 2015	Yarrow	Test	Akaroa Health center
13 Oct 2015	Siberian ginseng	Test	Akaroa Health center
05 Oct 2015	Abetimus	Doo Abetimus	Mt Pleasant Medical Centre
02 Oct 2015	Beta-glucans	Test	Akaroa Health center
02 Oct 2015	Balsam of Peru	Test	Akaroa Health center
02 Oct 2015	Japanese knotweed	Test	Akaroa Health center
31 Aug 2015	BCG preparations		Akaroa Health center
31 Aug 2015	Penicillins	Test	Akaroa Health center
12 Aug 2015	Yeast and yeast protein	Test modified on today displays 12	Akaroa Health center
11 Aug 2015	Balsam of Peru	test 11 - modified on 13th	Akaroa Health center

Results 1-10

MULTI-SOURCE ALERTS & WARNINGS



# HEALTHONE **DIAGNOSES** SCREEN

DOO, Scooby

DOB 28-Aug-1955 (60y)

SEX M

NHI ZAA0202

INPATIENT

<

>

🏠

Pegasus PC Clinician

LOGOUT

Clinical Docs

Eclair (NW)

HealthOne

Appts

Eclair Results

CCMS

Clinical Resources

Clinical Notices

SUMMARY

Services

Observations

Medications

Diagnoses

Alerts/Warnings

Diagnoses

NOTE - While all care has been taken in the preparation of the medical record, no warranty is given as to the accuracy, completeness or reliability of the data displayed. Information may be either missing or hidden due to a patient choosing to opt off, a facility not providing data, or due to access restrictions that are reflective of profession/role. Please always verify and check against other sources.

Date

Any Time

Last Month

Last Six Months

Last Twelve Months

Source

Search

Submit

Clear Filters

Key: Red = Highlighted, Blue = Long Term

Date	Classification	Comments	Source
16 Sep 2015	Joint isotope studies	test	Akaroa Health center
05 Oct 2015	Farming foreman	Doo Farming show	Woolston Medical Rooms
05 Oct 2015	Abdominal pain type	Doo Classification Abdominal	Mt Pleasant Medical Centre
31 Aug 2015	Cerv intraep neop grade I	Test	Akaroa Health center
31 Aug 2015	Diabetic retinopathy	Test Diabetic	Akaroa Health center
31 Aug 2015	ECG	test	Akaroa Health center

Results 1-6

MULTI-SOURCE DIAGNOSES/CLASSIFICATIONS





# HEALTHONE MEDICATIONS SCREEN

DOO, Scooby

DOB 28-Aug-1955 (60y)

SEX M

NHI ZAA0202

INPATIENT

< >

🏠

Pegasus PC Clinician

LOGOUT

Clinical Docs

Eclair (NW)

HealthOne

Apts

Eclair Results

CCMS

Clinical Resources

Clinical Notices

SUMMARY

Services

Observations

Medications

Diagnoses

Alerts/Warnings

NOTE - While all care has been taken in the preparation of the medical record, no warranty is given as to the accuracy, completeness or reliability of the data displayed. Information may be either missing or hidden due to a patient choosing to opt off, a facility not providing data, or due to access restrictions that are reflective of profession/role. Please always verify and check against other sources.

Prescribed Medications

Date

Any Time

Last Month

Last Six Months

Last Twelve Months

Source

Search

Submit

Clear Filters

Key: Blue = Long Term

Date	Brand, Form, and Strength	Instructions (Sig)	Quantity (mitte)	Source
13 Oct 2015	CALCI-TAB 500 1.25g Tab (equiv. Ca 500 mg)	400mg etidronate without calcium daily for 14 days then take calcium 1.25 Gm alone for 76 days. Then rept the cycle. Close control requested monthly	3	Akaroa Health center
13 Oct 2015	FLUVAX Inj	1 stat im	1	Akaroa Health center
13 Oct 2015	BUCCASTEM 3mg Buccal Tab	3mg high up between the upper lip and the gum 1/2 hr prior to taking the oval tabs for nausea	2	Akaroa Health center
05 Oct 2015	FARESTON 60mg Tab	Doo Fareston Show	1	Woolston Medical Rooms
05 Oct 2015	CATAPRES 150mcg/1ml Inj	Doo Catapres Show	1	Mt Pleasant Medical Centre
05 Oct 2015	SOFRADEX Ear/Eye Drops 8ml	Doo Ear Show apply and "earfull" tds for the otitis externa	1	Medical Centre
05 Oct 2015	ASPRO 320mg Tab	Doo aspro show	1	Medical Centre
02 Oct 2015	LPC SCALP compound	apply nocte and leave it in overnight shampoo mane	100	Akaroa Health center
02 Oct 2015	ACETIC ACID SOLUTION solution	2% acetic acid soln Sig: apply to the ulcer for 3 minutes and then wash off	100	Akaroa Health center

Dispensed Medications

Date

Any Time

Last Month

Last Six Months

Last Twelve Months

Source

Search

Submit

Clear Filters

Date	Generic	Brand, Form, and Strength	Instructions (Sig)	Quantity (mitte)	Source
20 Oct 2015	MORPHINE LA 60MG Tabs (ARW)	MORPHINE LA 60MG Tabs (ARW)	Take TWO tablets twice daily.	10 (tab)	Pegasustestharness
20 Oct 2015	ACIPIMOX 250MG C	OLBETAM 250MG C	Take ONE tablet daily for a month.	30 (cap)	Pegasustestharness
20 Oct 2015	GLYCEROL (PSM)	GLYCEROL (PSM)	Test	2000 (ml)	Pegasustestharness
19 Oct 2015	Amlodipine besylate	APO-AMLODIPINE 2.5mg Tablets	Take ONE tablet in the morning Avoid grapefruit and its juice	30 (Tablets)	Lincoln Pharmacy
19 Oct 2015	Atorvastatin	ZARATOR 20mg Tablets	Take ONE tablet once daily in the	30 (Tablets)	Lincoln Pharmacy
19 Oct 2015	Diltiazem HCl	APO-DILTIAZEM 120mg CD Capsules	Take ONE capsule once daily in the morning for blood pressure control Swallow whole do not	30 (Capsules)	Lincoln Pharmacy

PRESCRIBED AND DISPENSED MEDICATIONS

(94y) SEX F NHI

INPATIENT

< ☰ >

🏠

Nigel Millar

LOGOUT

Clinical Docs

Meds

Eclair (NW)

HealthOne

Unapproved Docs

Appts

Eclair Results

Observations

SDHB

Clinical Resources

MDM

SUMMARY

Services

Observations

Medications

Diagnoses

Alerts/Warnings

NOTE: While all care has been taken in the preparation of the medical record, no warranty is given as to the accuracy, completeness or reliability of the data displayed. Information may be either missing or hidden due to a patient choosing to opt off, a facility not providing data, or due to access restrictions that are reflective of profession/role. Please always verify and check against other sources

Enrolled GP

GP	Practice

Next of Kin

There is no next of kin to display for this patient.

Diagnoses Summary

View All

Key: Red = Highlighted, Blue = Long Term

Date	Classification	Comments	Source
11 Apr 2017	Enhanced Care Programme	Final review	
13 Dec 2016	Medication review	THREE monthly	
16 Dec 2014	Anticoagulant therapy	Warfarin. AF INR 2-3. LIFELONG	
14 Dec	Renal impairment	eGFR 28 4/13	

Alerts/Warnings (3 items)

View All

Date	Alert/Warning	Notes	Source
24 Jun 2013	Note	Codeine - felt funny	
24 Jun 2013	Note	NSAIDs - prone to stomach ulcers	
14 Apr 2012	Note	(NKA)	

HEALTHONE OVERVIEW | DECEMBER 2015

14









# USAGE SNAPSHOT

HEALTHONE HAS BECOME A PART OF DAILY CLINICAL CARE FOR MANY USERS

**50K**

## Views Per Month

Over 30k accesses from secondary users, and more than 15k accesses by GP users



**1.7M**

## Data Items Received

More than 1.7m data items are received every month from primary & community organisations

**7,000**

## Unique Users

More than 7k users access HealthOne every month



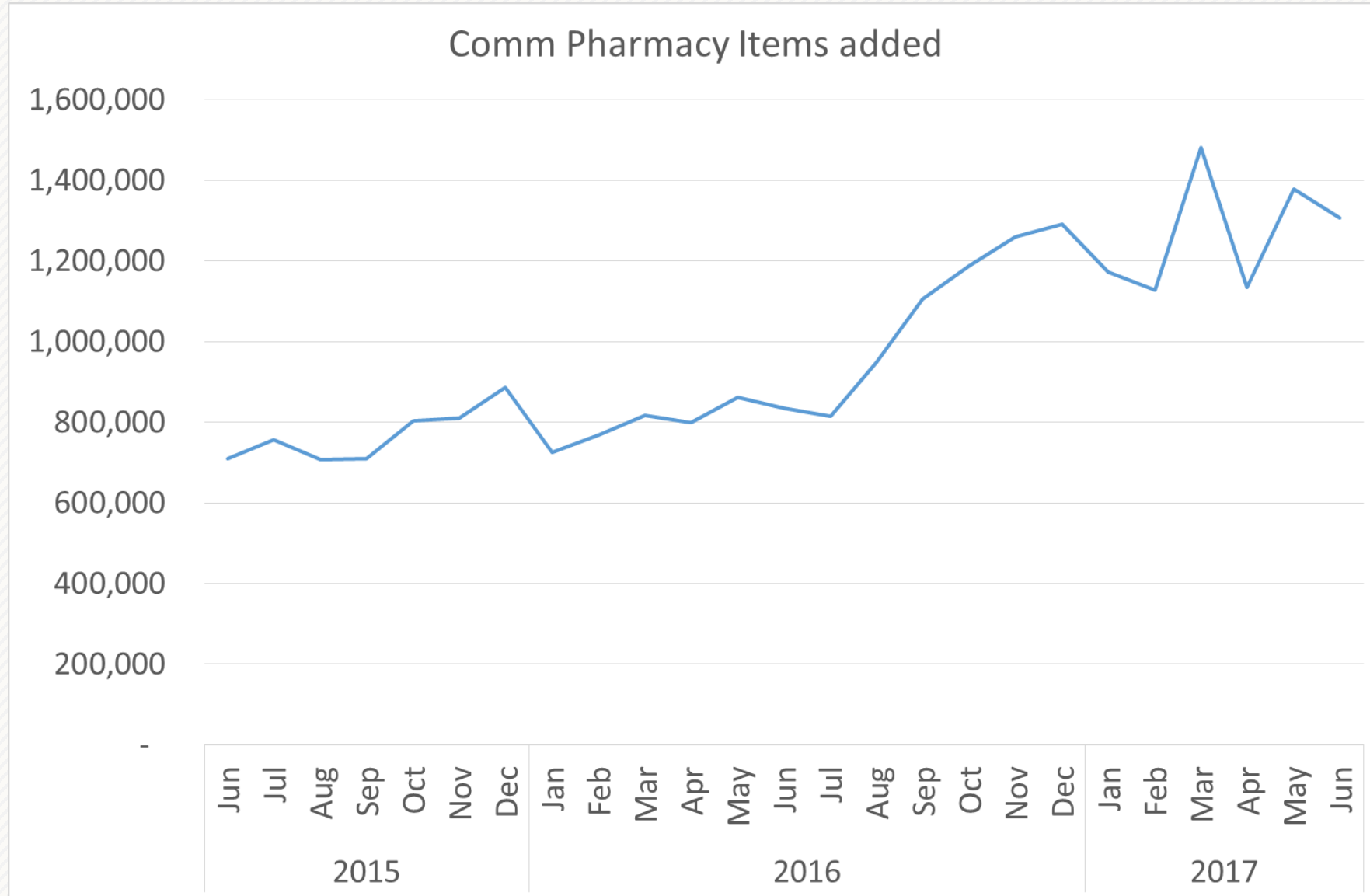
# USAGE SNAPSHOT





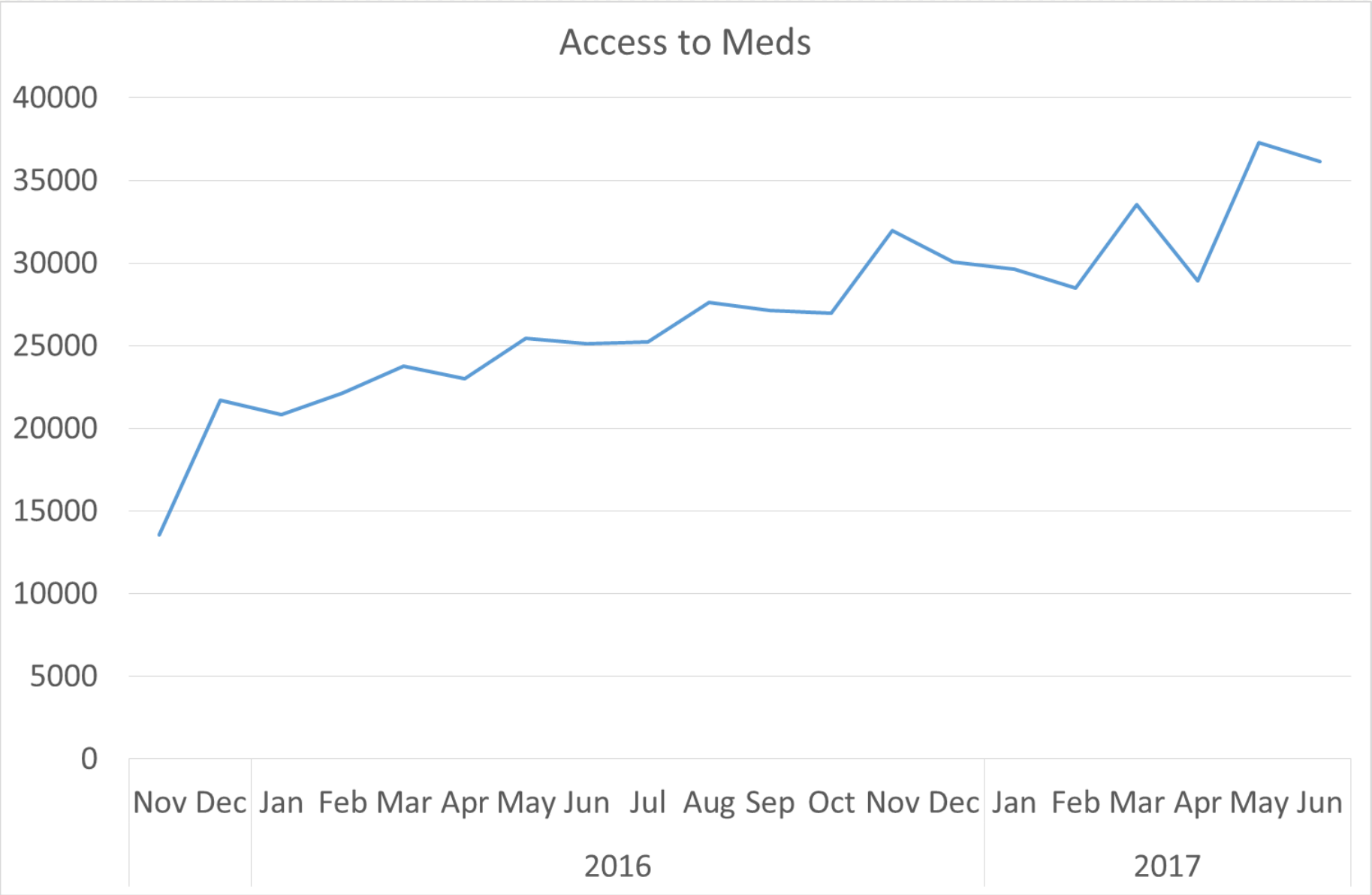


# USAGE SNAPSHOT





# USAGE SNAPSHOT

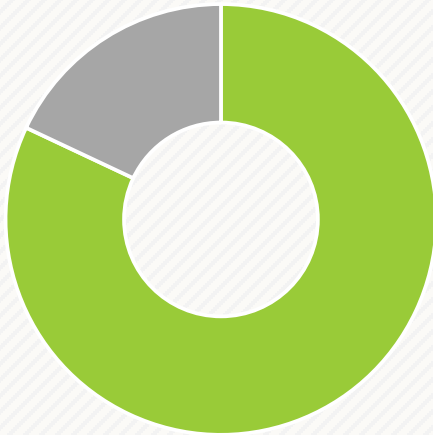




# WHAT CLINICIANS SAY

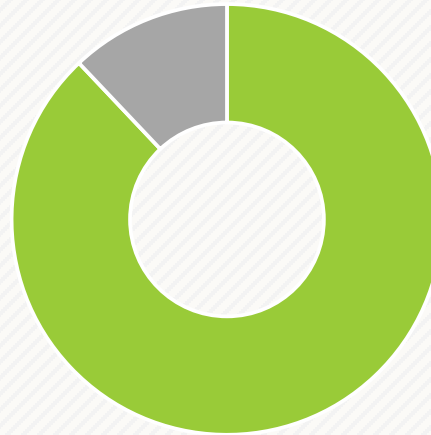
CURRENT USERS ARE VERY SUPPORTIVE OF THE HEALTHONE SYSTEM

81.25% **BENEFIT**



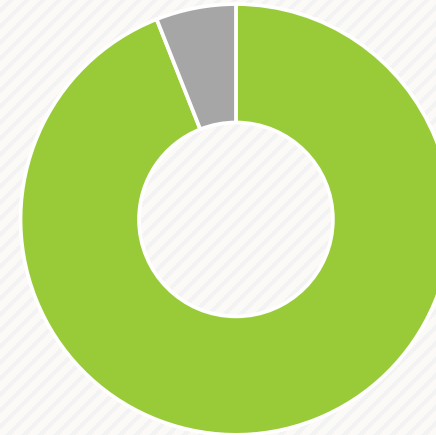
81.25% of users surveyed said that HealthOne provided **Significant Benefit** to their patients

87.5% **RECOMMENDATION**



87.5% of users surveyed said that they would be **Highly Likely** to recommend to another District that they should implement HealthOne

93.75% **RESPONSIVENESS**

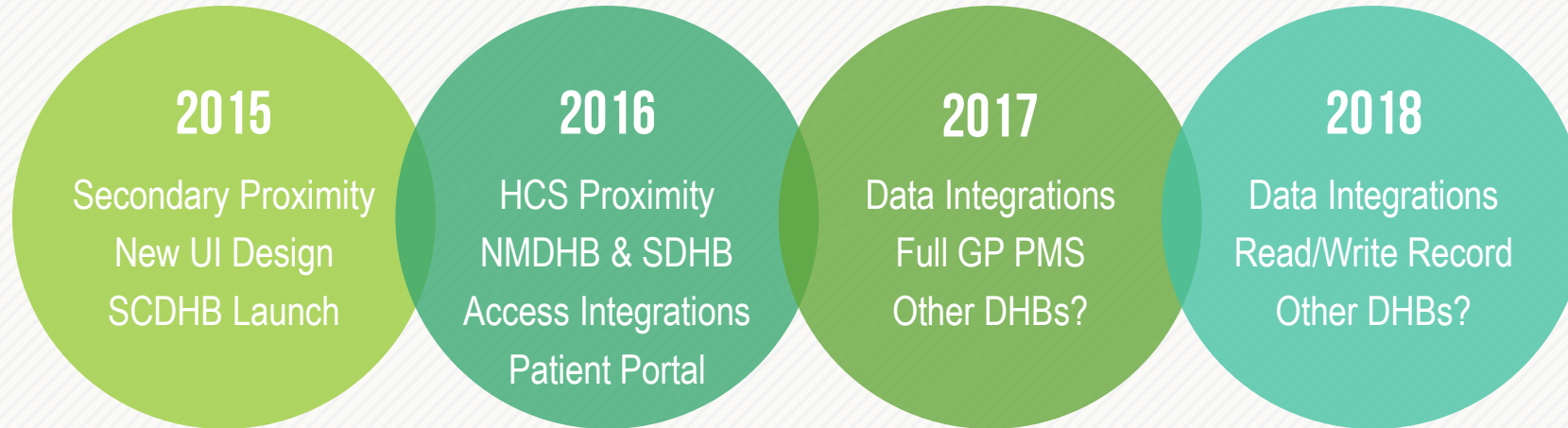


93.75% of users surveyed said that the HealthOne team are **Mostly or Very Responsive**



# OUR PLAN

WE ARE UNDERTAKING A MULTI-YEAR PROGRAMME TO DELIVER OUR VISION FOR HEALTHONE



## THE PATH TO LOCAL INTEGRATIONS

In 2015, our primary priority has been to release our new UI design, which moves HealthOne away from being provider focused, to patient centric. Now that this critical enabler is complete, we are poised to continue our work with local integration partners, and focus on bringing more sources of data into our Shared Record.





# OUR ON-BOARDING PROCESS

ON-BOARDING TO HEALTHONE IS A STRUCTURED AND WELL-REFINED PROCESS



## CONTACT

We manage the initial contact from a provider, including NDA, a suitability questionnaire, and working through pre-requisites



## AUDIT

Detailed Technical, Security, and Privacy Review & Audit, including integration requirements, resources, and readiness



## VALUE

Facilitated prioritisation session, to identify a peer-moderated Value assessment (for access and data integration) score



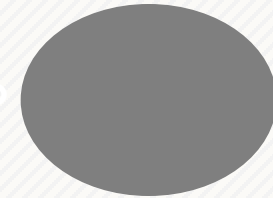
## PRIORITISATION

Provider questionnaire assessment, resulting in a scorecard for Risk, Feasibility, and Strategic Alignment



## AGREEMENTS

Agreement to proceed – planning started, legal agreements in place, commercial agreements finalised



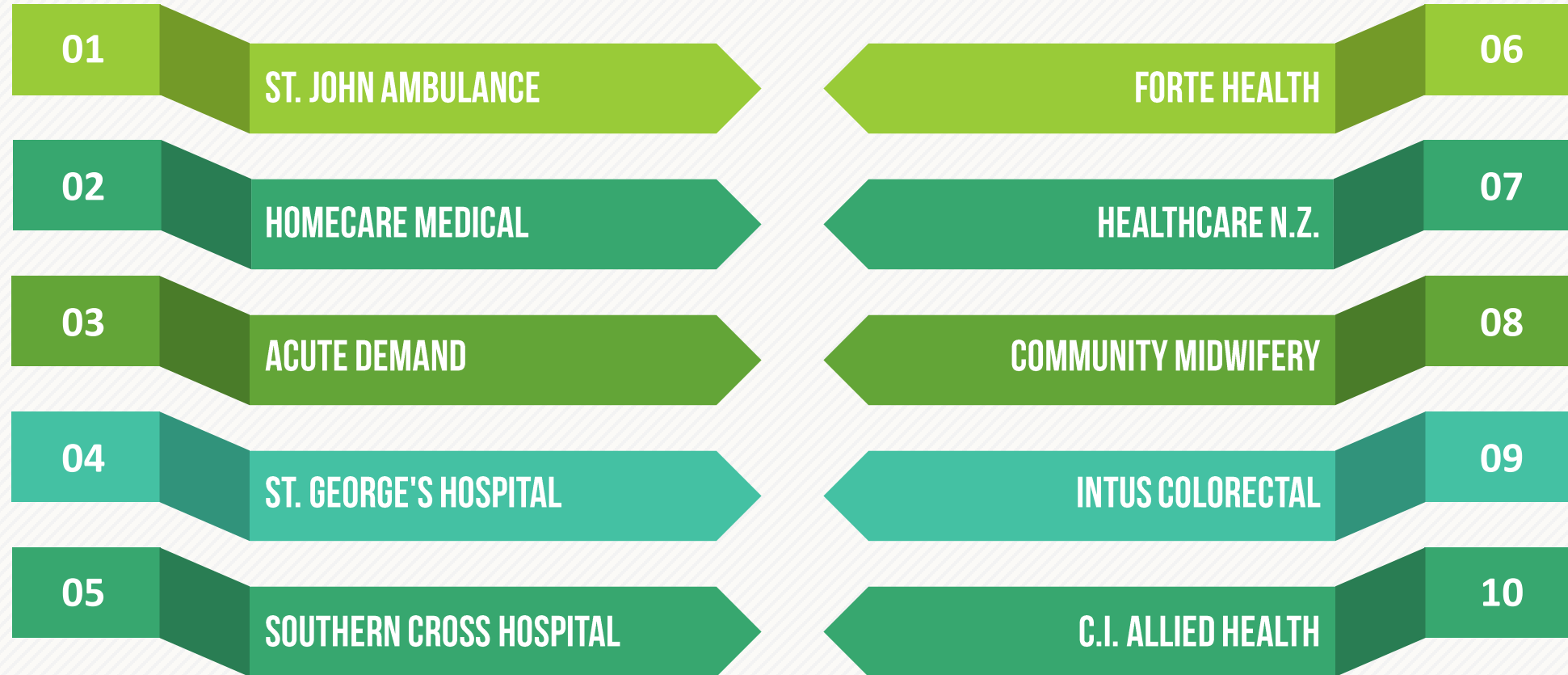
## PROJECT

Project Kickoff....



# INTEGRATION PARTNERS

DEMAND TO INTEGRATE IS SIGNIFICANT, WITH MORE THAN 20 PROVIDERS HAVING PROACTIVELY APPROACHED US



A photograph of a male healthcare worker with short dark hair, wearing a grey patterned button-down shirt and a red lanyard with an ID badge. He is leaning over a hospital bed, smiling at a young child. The child is sitting on the bed, wearing a red long-sleeved shirt with a giraffe graphic and dark shorts. The child is looking towards the camera. The background shows a hospital room with a bed frame, medical equipment, and a wall decorated with colorful heart stickers. A semi-transparent dark grey banner is overlaid across the middle of the image, containing the title text. Below the banner is a solid green horizontal bar containing subtitle text.

# OUR KEY LEARNINGS

WHAT WE DID WELL, AND WHAT WE DIDN'T



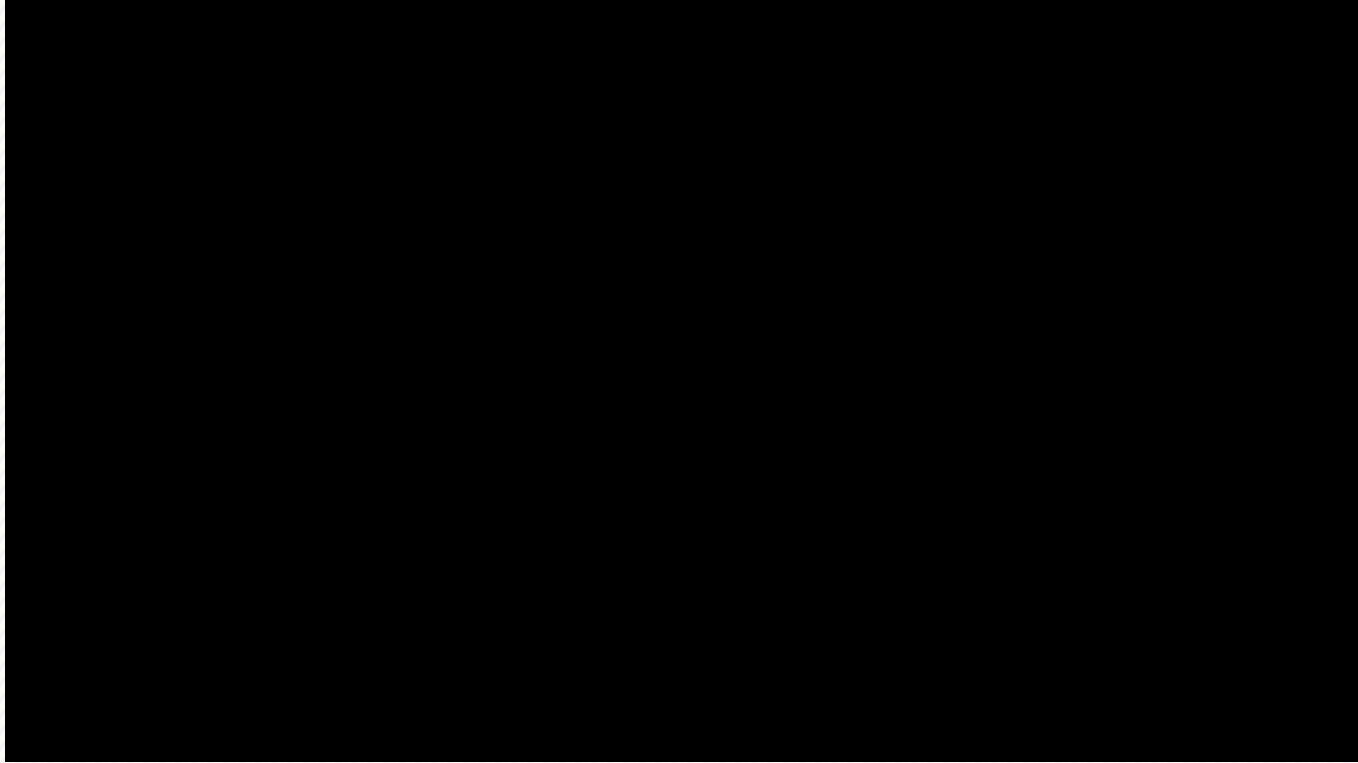
# HEALTHONE — MORE THAN AN I.T. PROGRAMME

AT THE FOUNDATIONS OF HEALTHONE ARE OUR CLINICAL STAKEHOLDERS

## ENGAGEMENT STARTS FIRST...









# QUESTIONS?

THANK YOU — WE HOPE TO SEE YOU SOON...



# CONTACT US

WE WOULD LOVE TO TALK WITH YOU FURTHER — SO GET IN TOUCH!



## VISIT OR MAIL US

HEALTHONE PROGRAMME TEAM  
C/- PEGASUS HEALTH (CHARITABLE) LTD.  
160 BEALEY AVENUE  
CHRISTCHURCH 8014

P.O. BOX 741  
CHRISTCHURCH 8140



## CALL US

PRIVACY OFFICE | 0508 837 872  
DANAE GODDARD WARD | +6421 319 000  
DAVID MOORHOUSE | +6433530871



## WEBSITE

[WWW.HEALTHONE.ORG.NZ](http://WWW.HEALTHONE.ORG.NZ)



## E-MAIL

[DANAE.GODDARDWARD@PEGASUS.ORG.NZ](mailto:DANAE.GODDARDWARD@PEGASUS.ORG.NZ)  
[DAVID.MOORHOUSE@PEGASUS.ORG.NZ](mailto:DAVID.MOORHOUSE@PEGASUS.ORG.NZ)



## SOCIAL MEDIA

[LINKEDIN.COM/IN/DANAE GODDARDWARD](https://www.linkedin.com/in/danaegoddardward)