
PIONEERS: NURSES RESPONDING TO THE CHANGING HEALTH CARE CONTEXT

Jean Ross, Associate Professor & Josie Crawley, Principal Lecturer
School of Nursing, Otago Polytechnic, Dunedin

ACKNOWLEDGEMENTS

- Rural Nurse Participants
 - Otago Polytechnic, Contestable Research Funding
 - Contributors to Stories of Nursing in Rural Aotearoa: A Landscape of Care
-

COLLECTING RURAL NURSE STORIES

- Project commenced in 2016
 - Participants and generating their stories who met criteria
 - Ethical Approval granted in 2016
 - Stories, situated with maps, historical contexts and poems
 - Images personal to the rural nurse and ourselves
 - Context
-

NARRATIVE INQUIRY

- Each nurse is the orchestrator of their own story and is identifiable
 - We have worked closely with each individual rural nurse
 - Their story is in their words
-

WHY?

- Capture the voice of the rural nurse
 - Understand
 - Learn from
 - Knowledge generation
 - Evidence-based
 - Future learners
 - Political
 - National and international stage
-

CHANGE, CHANGE AND MORE CHANGE

- New Zealand health care system has been subject to major health care reforms over the past three decades, in a climate of economic downturn.
 - Reforms influence the provision of health care
 - Health care services changed from national direction to local community governance
-

NURSES' OCCUPATIONAL TITLES

Occupational Titles	Established	Description	Setting
Registered Nurse	1901- continues to this day	Nurses' Registration Act legislates nursing practice	Community and hospital urban and rural
District Nurse	1901- continues to this day	Established by Nurse Maude Association to care for people in their own homes	Community initially in Christchurch
Plunket Nurse	1907- continues to this day	Infant wellbeing	Community-urban
Backblock Nursing	1909-1930s	Established to care for the European settlers	Rural community
Native Nursing (including School Nursing)	1911-1930	Established to care for Maori and become known as district nurses in the 1930s	Community, rural and Marae
Public Health Nurse	1911- continues to this day	Environmental health care	Community
Practice Nurse	1969/1970s- continues to this day	Initially aligned with rural general practice and later in the 1970s urban general practice	General Practice/rural community
Rural Nurse Specialist (RNS) & Rural Nurse	1990s- continues to this day	Identified area of nursing incorporating a mixture of Practice Nursing, Public Health Nursing, District Nursing, Hospital care & PRIME	Rural community
PRIME Nurse	1998- continues to this day	Emergency '24 hour' on call practitioner	Rural community
Nurse Practitioner	2001- continues to this day	Autonomous and expert practitioner with or without prescribing authority	All settings
Mobile Operating Theatre	2002- continues to this day	Rural nurses contributing to the delivery of surgical health care	Rural communities

PIONEERS

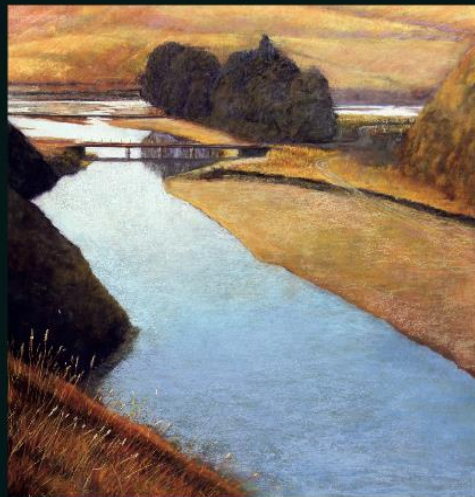
- Nurses responding & pioneering to the health care changes
- Equity
- Access
- New models
- Emerging innovative practice

NURSES IN RURAL AOTEAROA: NATIONAL NORMS...30 YEARS ON

- Unique positions created to ensure the provision of localised health care was available
- Chemotherapy
- Palliative Care
- Transfer (Flight)
- Standing Orders
- Telehealth
- Community Mental Health
- PRIME
- Rural Nurse Specialist (RNS)
- NP scope of practice

Stories of Nursing in Rural Aotearoa:

A Landscape of Care

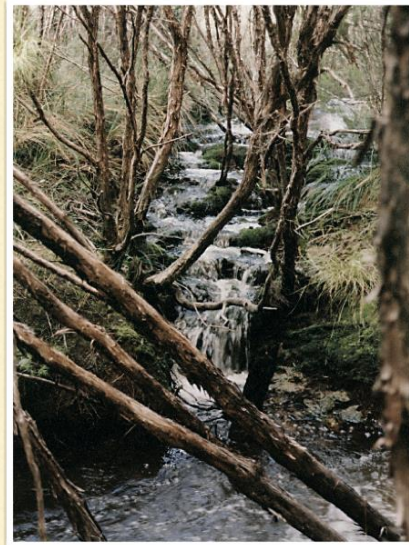


Edited by Jean Ross and Josie Crawley

INTRODUCING
STORIES OF NURSING IN RURAL AOTEAROA: A
LANDSCAPE OF CARE

CONTEXT/S

CONSIDER YOUR
OWN THROUGH
THE LENS OF
'PLACE'



CONTEXT AS 'PLACE'

- [Location](#)
 - Locale
 - Sense of place
-

ONGOING CONTRIBUTIONS

- Through:
 - Interest in receiving the book- your contact and postal details (email address below)
 - Scope, Contemporary Research Topics, Health and Wellbeing, 2019, (4) Rural (Submissions close July 31 2019)
 - ANEC November 2019 in Dunedin (Abstracts close May 17, 2019)
 - jean.ross@op.ac.nz
-

- Thank You
